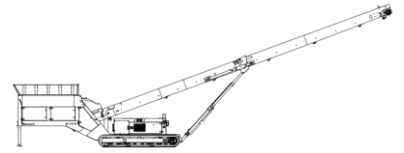


TESAB

ENGINEERED FOR POWER. BUILT TO LAST.

5040SF

June 2022



TECHNICAL SPECIFICATION



5040SF FEEDER CONVEYOR

Optional equipment may be shown

DESCRIPTION

The newly designed SF50 is Tesab's latest offering as a feeder stacker. It comprises of a 10ft feeder hopper that transfers material onto an 50ft conveyor. Designed to allow operators to stockpile/transfer material it eliminates double handling of materials.

The unit can also be compacted for transport into a 40ft high cube container, reducing transport costs The SF50 feeder Conveyor comes with the following features as standard:

- Hydraulic folding heading section for transport minimizing setup time.
- Hydraulically adjustable discharge height up to 6.5 Meters
- 3.5 Meter tracks for superior maneuverability and stability.
- CAT 2.8 55KW (74HP) LRC/Stage V giving a rating of up to 500 TPH.
- Fuel efficient Hydraulics system.
- User Friendly Hydraulic Controls
- Hopper extensions increasing capacity

DIMENSIONS AND CAPACITIES

Length – working (Max)	18.9m (62'-2")
Height – working (Max)	6.5m (21'-3")
Length – transport	11.98m (39'-4")
Width – transport	2.3m (7'-6")
Height – transport	2.6m (8'-5")
Maximum Production Rate	500 MTPH (550 TPH)
Max Product Size	100MM (4") minus
Weight	14500KG Approx.
Hopper Capacity	6 M ³ (8 Yd ³)

MATERIALS

Materials include but are not limited to;

- Sand and Gravel
- Aggregates
- Compost
- Topsoil
- C and D waste
- Coal

FEED CONVEYOR

Belt width	1000mm (40")
Belt spec	Plain 500/3 6+3
Drive drum dia.	335mm (13.1")
Tail drum dia.	320mm (12.5")
Gearbox	Bonfig 805 W2
Motor	160cc motor
Flow rate	72.6 Lpm (19.2 US gpm)
Adjustable speed	YES
Maximum speed	18.75 rpm

CONVEYOR

Belt width	1000mm (40")
Belt spec	3 Ply (400/3 5+1.5)
Scraper	Urethane scraper as standard
Pulley Adjuster	Standard Threaded Bar
Conveyor Idlers	45 Degree angle
Return Idlers	Self-Cleaning Rubber Disc
Conveyor motor	Single DANFOSS OMV800
Drive Drum	350mm Ø with Herringbone Lagging
Tail Drum	270mm Ø spoked drum

CAPACITIES

Hydraulic tank	285 L (75 US gal)
Diesel Tank	200 L (53 US gal)

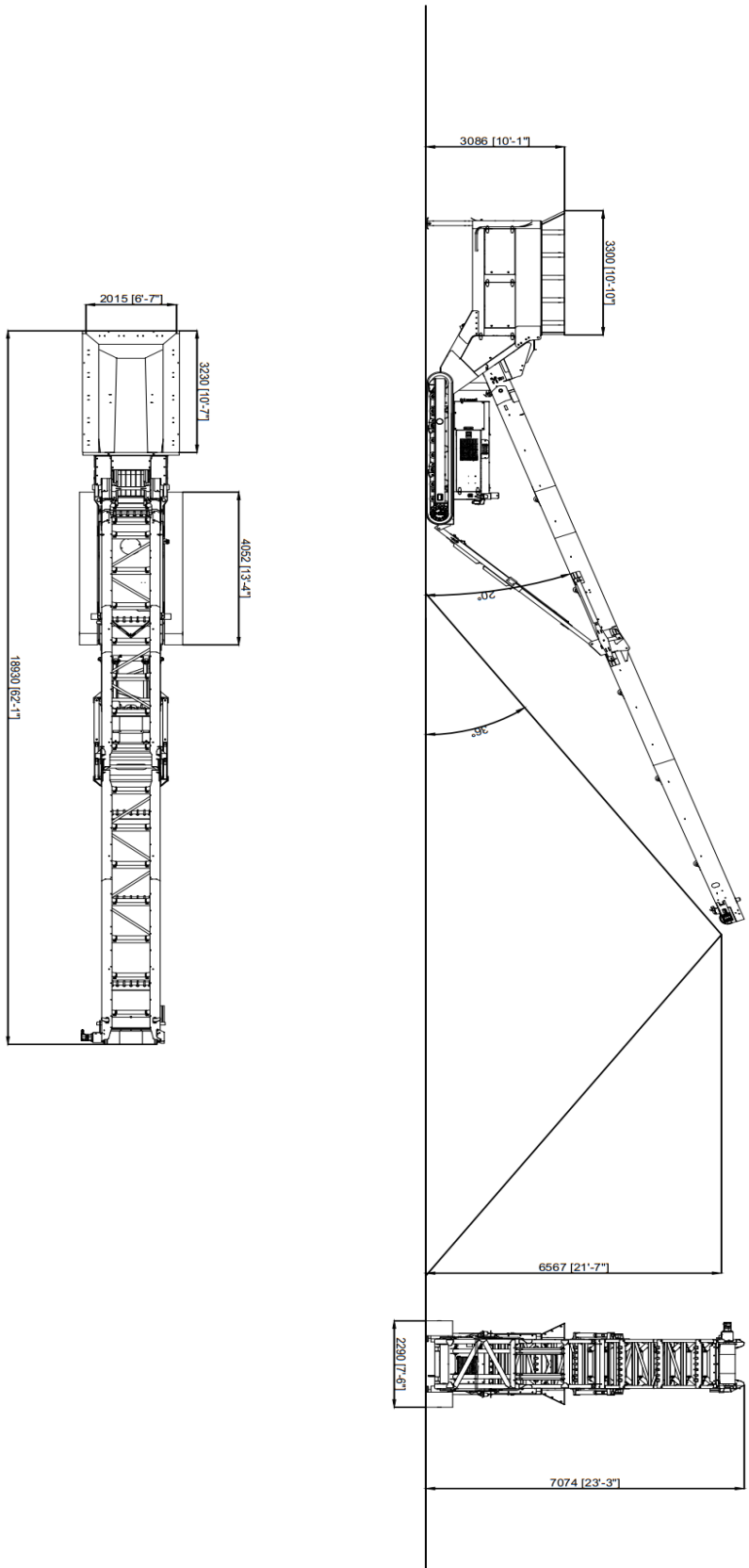
OPTIONS INCLUDING BUT NOT LIMITED TO;

- Feed hopper hardox liners.
- Remote control tipping Grid
- Head Scraper upgrade.
- Anti-Roll backs
- CAT 2.8 55KW Stage V
- Radio remote tracking
- Chevron belt on main conveyor
- Full Skirting on Main Conveyor
- Dual power Electric

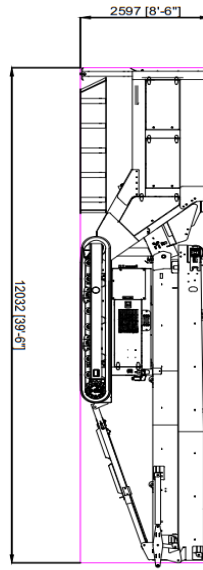
SAFETY FEATURES

- External belt alignment points.
- External grease points.
- Engine safety shutdown systems.
- Full safety guarding for nip points.

WEIGHT OF STANDARD
MACHINE: APPROX 14500 KG



WEIGHT OF STANDARD
MACHINE: APPROX 14500 KG



STD 40FT HIGH CUBE
CONTAINER

